

WHAT IS SHIELDEX 400SC HERBICIDE?

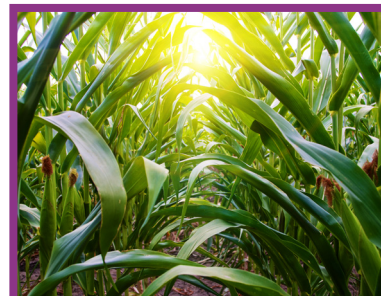
Shieldex[®] 400SC Herbicide, a new Group 27 mode of action herbicide from Gowan Canada for use on field, pop, seed and sweet corn. Independent research has shown that the active ingredient in Shieldex, tolpyralate, provides the most consistent control of broadleaf and grass weeds in corn.

KEY BENEFITS

- Effective against key broadleaf weeds like Canada Fleabane, Waterhemp and Pigweed, as well as other broadleaf and annual grasses
- Convenient low application rates between 75 - 100 ml/ha (30 - 40 ml/acre)
- Good tank-mix compatibility - excellent fit with atrazine
- Wide broadcast application window on corn up to V6
- No restrictions when used with any currently registered insecticide
- Shieldex 400SC may be tank mixed with other herbicides specified for use on corn

TECHNICAL INFORMATION

Active Ingredient	Tolpyralate- Group 27
Mode of Action	Tolpyralate blocks carotenoid biosynthesis in plants by inhibiting the function of HPPD enzyme and eventually causes bleaching of new plant growth.
Registered Crops	Field Corn, Sweet Corn, Popcorn, Seed Corn
Application Timings	Apply Shieldex 400SC when susceptible weeds are young and actively growing, but before they exceed 10 cm in height. Apply to corn up to V6 stage to promote optimum coverage and control.
Use Rates	75 - 100 ml/ha (30 - 40 ml/acre)
PHI	Field Corn & Popcorn: 45 days Sweet Corn: 35 days
REI	12 hours; 2 days for corn detasseling



CROPS

Field Corn
Sweet Corn
Popcorn
Seed Corn

WEEDS

Canada Fleabane
Waterhemp (common, tall)
Pigweed (redroot, smooth)
Palmer Amaranth
Powell Amaranth
Lamb's-Quarters (common)
Ragweed (common and giant)
Wild Mustard
Common Cocklebur
Common Purslane
Shepherd's Purse
Pennsylvania
Smartweed
Velvetleaf
Lady's Thumb
Large Crabgrass
Barnyard grass
Foxtail (Giant, Green & Yellow)

1-800-960-4318
gowanCanada.com

Gowan[®]
CANADA

Shieldex[®] is a registered trademark of Ishihara Sangyo Kaisha, Ltd. All other brands are trademarks of their respective owners. REGISTRATION NO: 32943 PEST CONTROL PRODUCTS ACT. ALWAYS READ AND FOLLOW LABEL DIRECTIONS.

SHIELDEX: A PLANNED APPROACH - 3 SCENARIOS

PRE:

- A set-up rate of Dual, PrimeExtra, Focus, etc.
- Come back at the 3 - 8 leaf corn stage with Shieldex, Atrazine, MSO

Early POST:

- Residual grass with Shieldex, Atrazine, MSO

POST:

- 4+ leaf corn
- Shieldex, Atrazine, MSO

CORN LEAF STAGES

Corn Leaf Counting Methods:

1. Leaf Tip: count all leaves including any leaf tip that has emerged from the whole at the tope of the plant
2. Leaf Over: count leaves that are fully emerged and are arched over
3. Leaf Collar: count leaf collars visible, where the leaf collar is the light green to whitish band that separates the leaf blade from the leaf sheath, which wraps around the stem. The corn stages are referred to as V1, V2, V3, etc where the V3 stage is a plant with three collars showing

RE-PLANT INTERVALS

Corn, Sweet Corn, Seed Corn and Popcorn	Immediate
Winter Wheat, Rye (annual and Fall)	3 months
Alfalfa, Barley, Cabbage, Canola, Cotton, cucurbits, Dry bean, Grass (seed or forage), Oats, Peas (field and edible), Peanut, Potato, Rice, Snap beans, Sorghum, Soybean, Sunflower, Tomato	9 months
Sugar Beets	18 months
All other rotational crops	12 months

For more information on **Shieldex 400SC Herbicide** please contact your local Gowan Canada Sales Representative, call 1-800-960-4318 or visit us online at gowancanada.com



CROPS

Field Corn
Sweet Corn
Popcorn
Seed Corn

WEEDS

Canada Fleabane
Waterhemp (common, tall)
Pigweed (redroot, smooth)
Palmer Amaranth
Powell Amaranth
Lamb's-Quarters (common)
Ragweed (common and giant)
Wild Mustard
Common Cocklebur
Common Purslane
Shepherd's Purse
Pennsylvania
Smartweed
Velvetleaf
Lady's Thumb
Large Crabgrass
Barnyard Grass
Foxtail (Giant, Green & Yellow)

1-800-960-4318
gowancanada.com

Gowan
CANADA

Shieldex® is a registered trademark of Ishihara Sangyo Kaisha, Ltd. All other brands are trademarks of their respective owners. REGISTRATION NO: 32943 PEST CONTROL PRODUCTS ACT. ALWAYS READ AND FOLLOW LABEL DIRECTIONS.

IB22_07_Shieldex_400_SC_overview_vc001