

BENEFITS

- Proven performance of Avadex[®] PLUS Group 3 for wider spectrum
- Removes up to 80% of wild oats before they emerge
- Reduced selection pressure for post-emergent herbicides
- Maximize yields with early weed removal
- Excellent choice for base of herbicide layering program

APPLICATION TIMING

Spring and fall are both options. Apply at the first available opportunity to make sure it gets done

Fall: Any time after September 15th

Spring: At least 7 days before seeding

INCORPORATION

Shallow incorporation at time of application or within 24 hours will increase control, based on research studies. The most aggressive tillage tool utilized on a particular field in past years should be used.

RECROPPING

Do not seed oats, sugar beets, or small-seeded annual grasses such as timothy, canary seed grass, or creeping red fescue the following year. Do not use for wheat if trifluralin has been used since June 1 of previous year.

BULK DENSITY AND APPLICATOR SETTINGS

629.53 kg/cu. m. (39.3 lb/cu. ft). Use the nearest number in applicator flow rate sheet. Calibration is required for accurate application rates.

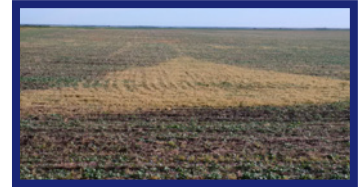
FALL RATES

22.7 KG or 453.6 KG bags available

Crop	<2% OM	2-4% OM	>4% OM	>6% OM	Seeding Depth
Spring or Durum Wheat	Do Not Use	11 kg/ha* (10 lbs/ac)	14 kg/ha** (10-12.5 lbs/ac)	14 kg/ha (12.5 lbs/ac)	Ensure seed depth is more than 1.27 cm (1/2") below incorporation depth. ¹
Spring Barley	11 kg/ha* (10 lbs/ac)	14 kg/ha** (10-12.5 lbs/ac)	14 kg/ha (12.5 lbs/ac)	17 kg/ha (15 lbs/ac)	
Canola, Flax, Mustard, Field Peas	14 kg/ha (12.5 lbs/ac)	14 kg/ha (12.5 lbs/ac)	14 kg/ha*** (12.5 lbs/ac)	17 kg/ha (15 lbs/ac)	As desired

*FALL application only, do NOT use in the SPRING. **11 kg/ha in the SPRING. ***17 kg/ha in the SPRING. Always refer to product label for rate and timing restrictions.

¹Recommended seeding depth is minimum 6 cm (1.5 inches). Seeding too deep may stress the crop.

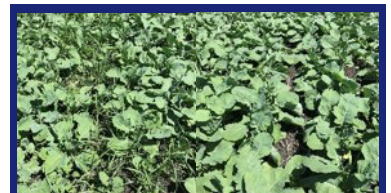


CROPS

Canola
Spring Wheat
Durum Wheat
Spring Barley
Flax
Mustard

WEEDS

Wild Oat
Green Foxtail
Yellow Foxtail
Kochia
Wild Buckwheat
Redroot Pigweed
Lamb's-Quarters
Russian thistle



1-800-960-4318
gowancanada.com

Gowan[®]
CANADA

Fortress[®] is a registered trademark used under license by Gowan Company, L.L.C. MicroActiv[®] is a registered trademark of Gowan Company, L.L.C. ALWAYS READ AND FOLLOW LABEL DIRECTIONS. REGISTRATION NO. 19521, PEST CONTROL PRODUCTS ACT.